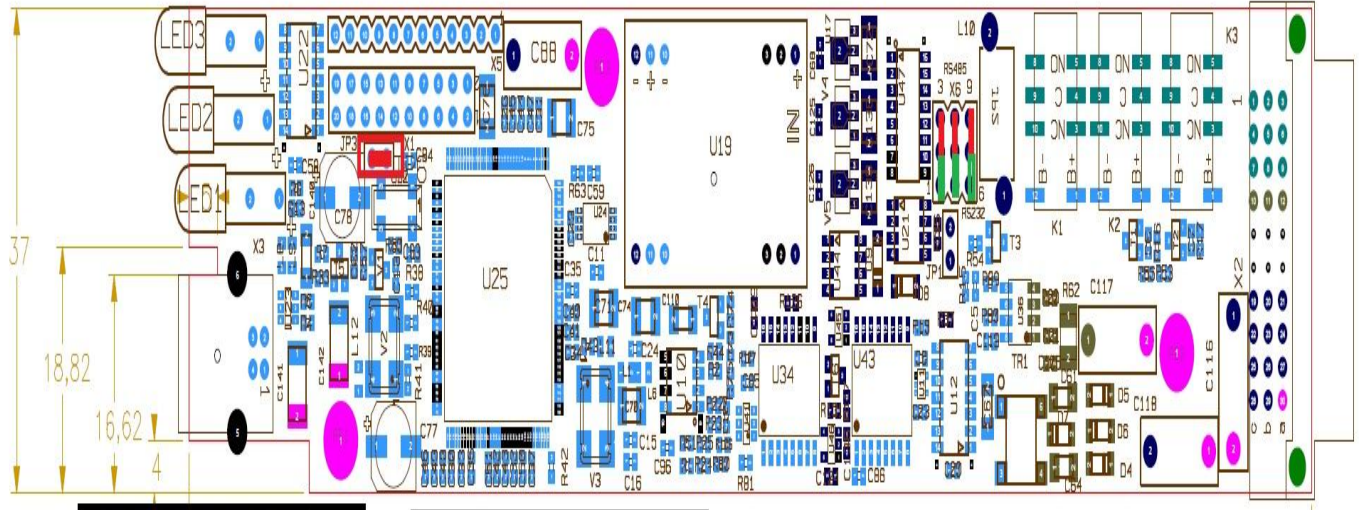


In T2S Need to change the Jumper setting for RS-485



- RS485 Jumper Selections**
-
- Make a Link
- 1.JP3
 - 2.X6 Pin 2 & 3
 - 3.X6 Pin 5 & 6
 - 4.X6 Pin 8 & 9

- RS232 Jumper Selections**
-
1. Remove Link → JP3
 2. Make a Link
 - 3.X6 Pin 1 & 2
 - 4.X6 Pin 4 & 5
 - 5.X6 Pin 7 & 8

SECTION 1 : Hardware requirements

1. Cabling :

ModBus is available on the on RJ45 connector located on the back plane of the rack containing the T2S controller. The pinout of this connector is the following :

Name	Description	Pin Number
CANH	CANH pin for CAN bus	1
CANL	CANL pin for CAN bus	2
GND_IAX	Digital communication ground	3
GND_IAX	Digital communication ground	4
12V_IAX	Unregulated +12V	5
COM TX A	RS232 Transmit pin (Option RS485: A [+])	6
GND_IAX	Digital communication ground	7
COM RX /A	RS232 Receive pin (Option RS485: /A [-])	8

2. Baud rate, parity and mode :

Baud rate is **fixed** to 19200 bauds. Even parity is used. Only RTU mode is currently supported

Summary :

Item	Value
Slave address	Configurable from 1 to 247
Baud Rate	19200
Parity	Even
Mode	RTU
Electrical interface	RS232 (Option : RS485)